

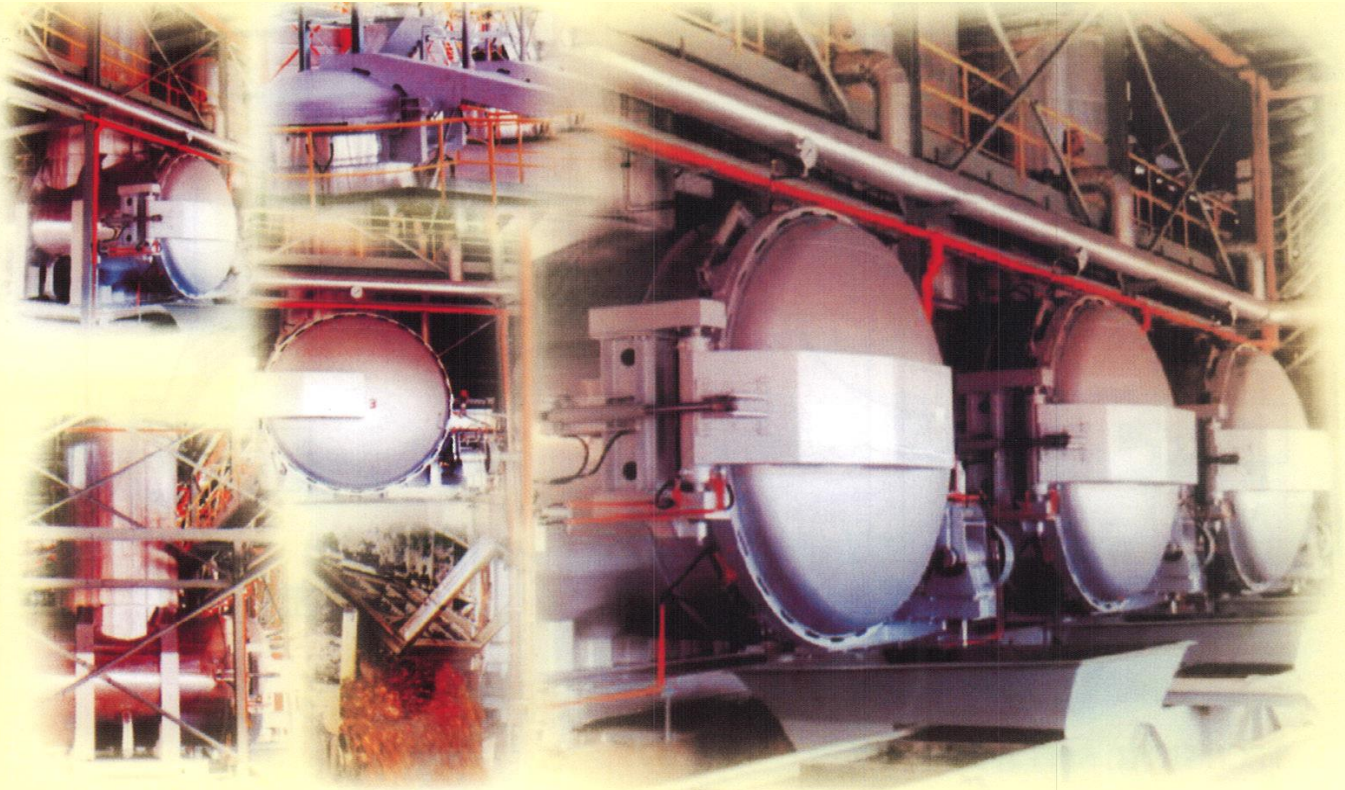


**UNI-VESSEL AUTOMATION SDN. BHD.** (Co. No. 709326-U)

No. 1564 Jalan Tasek, 14120 Simpang Ampat, Seberang Perai Selatan, Pulau Pinang

Tel : 604-5888341, 5880780, 5889723, 5886009 Fax : 604-5889615

Email : [project@uni-vessel.com](mailto:project@uni-vessel.com)

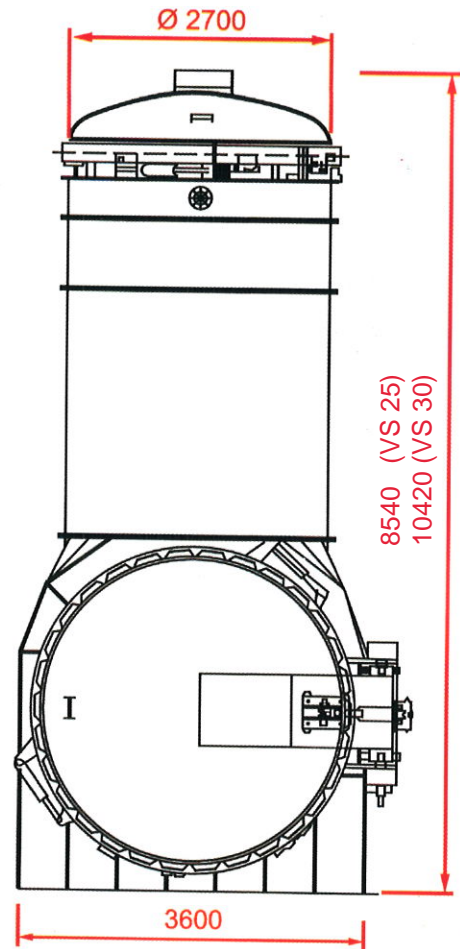
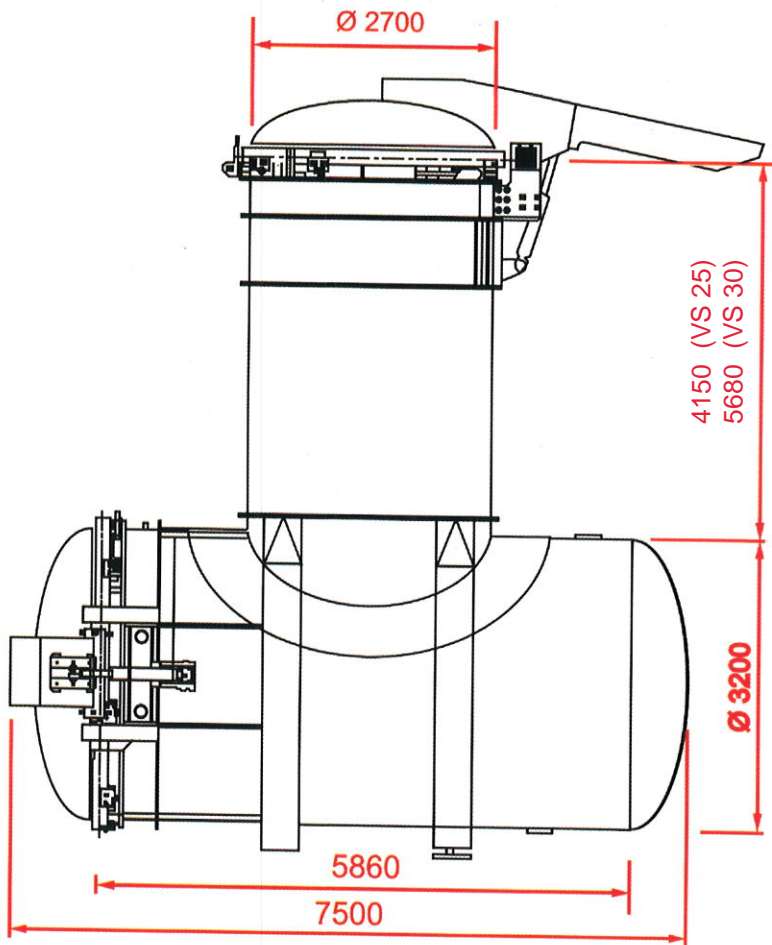


UVE Automated Steriliser X25 (UVEAS) System was developed to simplify the whole sterilisation station to produce the finest and most consistent ffb sterilisation effortlessly and unobtrusively. FFB is conveyed via scraper conveyor from the loading ramp to the UVEAS. After sterilisation, the sterilised bunch is conveyed via scraper conveyor to the thresher.

### *Advantages and benefits of the system :*

- Simple Design
  - Fully Automatic
  - Low Maintenance Cost
  - Lower Construction Cost
  - Lower Manpower Cost
  - Clean And Safe Environment
  - SCADA Ready (Optional)
  - CCTV Monitoring (Optional)
- NO MORE FFB cage, railtrack, hoist, capstan, bollard, winch, cantilever bridge, transfer carriage, cage indexer and tipper.
  - The whole sterilisation process is fully automated when integrated with the fruit handling equipment. This reduces the overall complexity and improving system reliability thus producing the finest sterilisation.
  - Less machinery, less maintenance work resulting in lower maintenance cost.
  - The building, civil and mechanical works are greatly reduced due to the simple design resulting in lower capital investment.
  - The sterilisation station require less manpower to operate resulting in lower labour cost.
  - There is no more unsightly dripping of CPO on the railtrack and floor space when the ffb cage is transferred across the sterilisation station.
  - The system can be configured with the server for Real Time Data Capture & Recording.
  - The system can be configured with the automation system for remote visual monitoring.





## TECHNICAL SPECIFICATION

<b>Design Capacity</b>	<b>25mt FFB per charge.</b>
<b>Design Pressure</b>	<b>45psig.</b>
<b>Sterilizer Door</b>	<b>Horizontal section : 3200mm diameter.</b> <b>Vertical section : 2700mm diameter.</b> <b>Both the opening/closing and unlocking/locking of doors are hydraulically actuated.</b>
<b>Mill Throughput</b>	<b>30 ton per hour : 3 units.</b> <b>45 ton per hour : 4 units.</b> <b>60 ton per hour : 5 units.</b> <b>90 ton per hour : 7 units.</b>
<b>Oil Losses</b>	<b>Sterilizer condensate : 1.5% - 3.5% wet basis.</b> <b>Empty bunch : 2.0% - 4.0% wet basis.</b>
<b>Internal Extraction Conveyor</b>	<b>Fabricated from 4.5mm thick stainless steel plate with 6" pitch EWART chain and 7.5kW triple reduction ratio FLENDER / SEW ( or equivalent ) gearbox.</b>
<b>Load Cell</b>	<b>4 units x 45,000kgf compression type.</b>